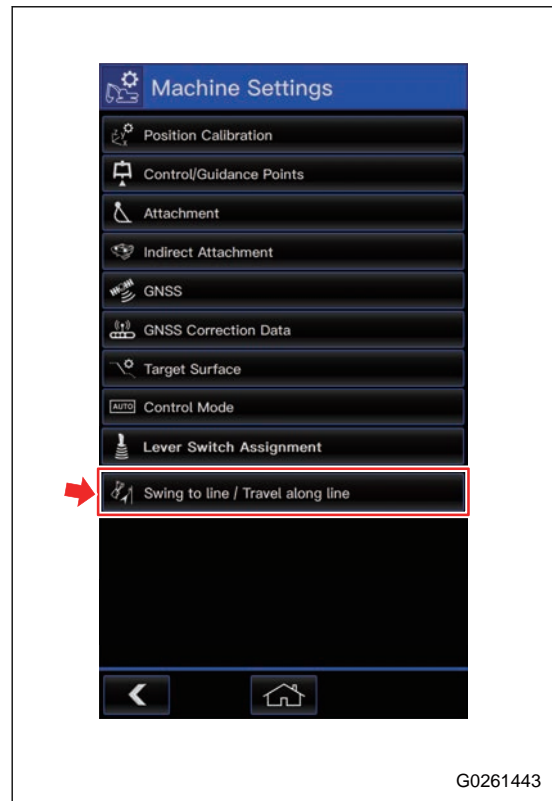


## Swing to line/Travel along line

The travel along line function automatically steers the machine to follow the steering target. It does this when you move the forward/reverse track control, which is assigned to the wheel on the work equipment lever. Swing to Line is a function that automatically sets the operation (swing, work equipment operation) to the starting position of ditching. Read Executions, “Travel Along Line (6-45)” and “Swing to Line (6-50)” carefully before you use it.

When you tap “Swing to line/Travel along line” button on “Machine Settings” menu screen, the screen changes to “Swing to line/Travel along line” screen.



### How to Set Swing to line / Travel along line Control Mode

You can select the function to be activated on “Swing to line / Travel along line” screen.

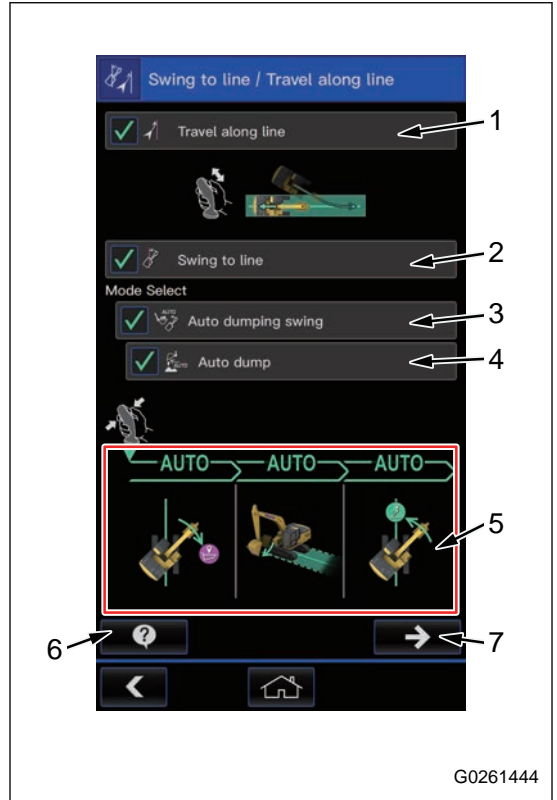
When the system is activated, the check mark is shown in green.

- (1) “Travel along line”: Changes Valid/Invalid of the travel along line function. For details, see “Travel Along Line (6-45)”.
- (2) “Swing to line”: Changes Valid/Invalid of the swing to line function. For details, see “Swing to Line (6-50)”.
- (3) “Auto dumping swing”: Changes Valid/Invalid of the auto dumping swing function. This can be set only when “Swing to line” (2) is activated.
- (4) “Auto dump”: Changes Valid/Invalid of the auto dump function. This can be set only when “Auto dumping swing” (3) is activated.

**REMARK**

- (5) shows the state of “Swing to line” control and the timing when the auto control starting switch is pushed.
- When you tap the help button (6), the overview of this setting is shown.

When you tap the next button (7), the screen changes to the next screen.



G0261444

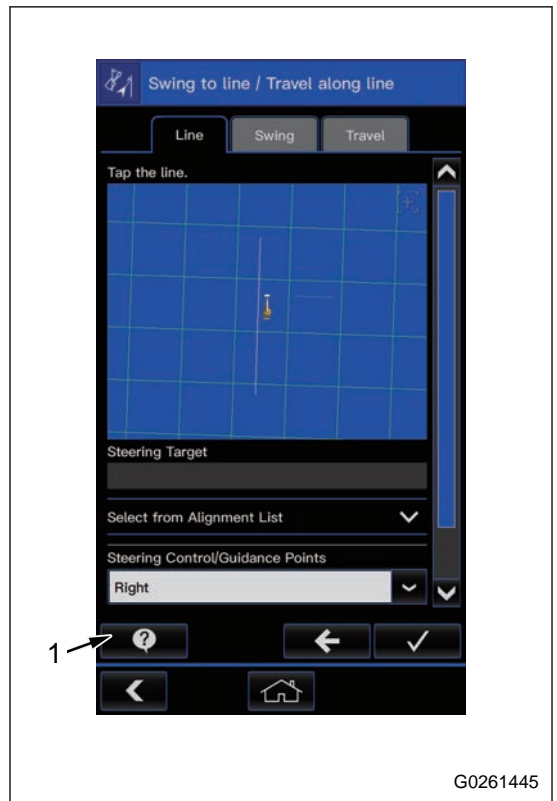
### Line Tab

“Line” tab allows you to select a path (steering target) and steering control/guidance points. When you change the steering target, the steering offset becomes 0. For the procedure to select the steering target, see “Steering Target (5-152)”. For the procedure to select the control/guidance point for the steering, see “Control/Guidance Point (5-190)”.

**REMARK**

The settings on this screen are linked to “Steering Target” and “Steering Control/Guidance Points” menus.

When you tap the help button (1), the overview of this setting is shown.



G0261445

### Travel Tab

In “Travel” tab, you can set “Travel along line”. This setting is not required when only “Swing to line” is used.

#### How to set “Approach Angle”

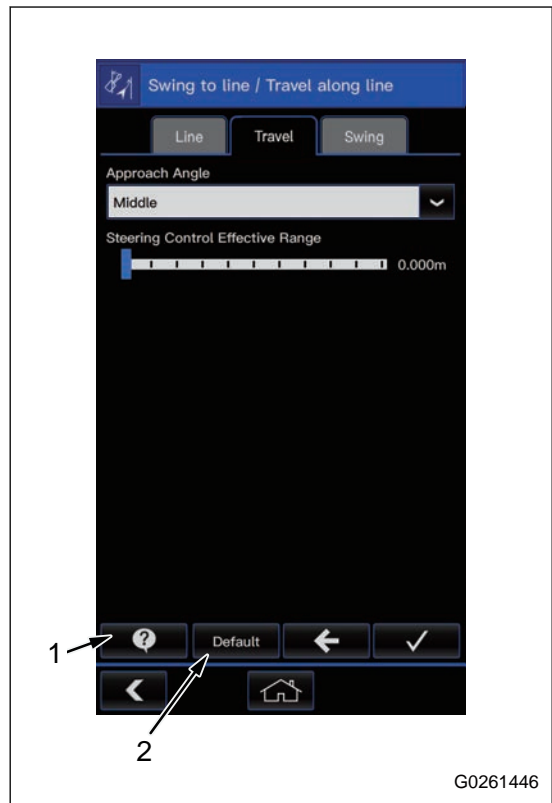
Select “Approach Angle” from “Slow”, “Middle” or “Sharp”. During the approach, in “Slow” it moves slowly toward the steering target, and in “Sharp” it moves linearly.

#### How to set “Steering Control Effective Range”

Set the distance from the steering target to operate “Travel along line” function. The setting result is shown in “Steering Control Effective Range” on the screen. For details, see “Display Travel Along Line Function on Screen (6-47)”.

#### REMARK

- When you tap the help button (1), the overview of this setting is shown.
- When you tap “Default” button (2), all the operations of “Travel” tab are initialized.



G0261446

### Swing Tab

In “Swing” tab, set it to “Swing to Line”. This setting is not required when only “Travel along line” is used. See “Travel Tab (5-276)”.

#### How to set “Height (H)” of “Return Point”

Set the arm top position to the height to be dumped, and tap the position acquisition button (1).

#### NOTICE

- This can be set only when the machine is on the steering target.
- To prevent contact with the ground, you cannot set the value below 1 m.

#### “Direction” of “Return Point”

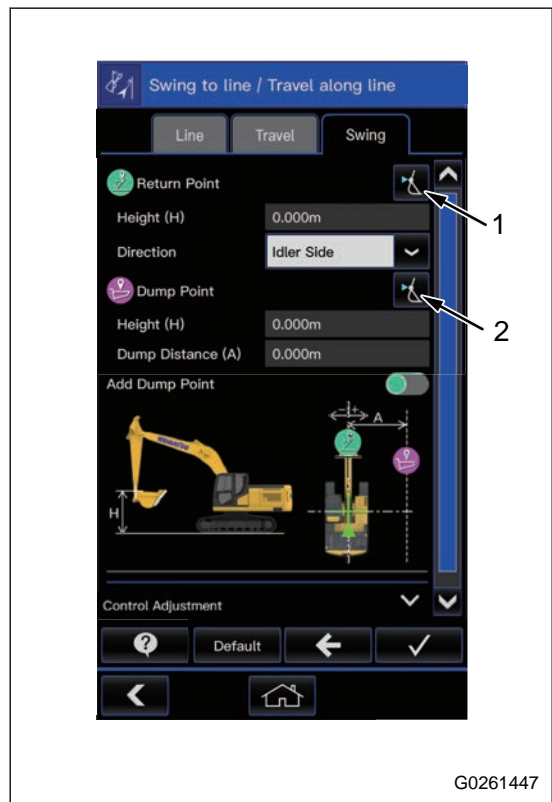
Select whether to go back to “Idler Side” or “Sprocket Side”.

#### How to set “Height (H)” and “Dump Distance (A)” of “Dump Point”

Set the arm top position to the height to be dumped, and tap the position acquisition button (2).

#### NOTICE

- This can be set only when the machine is on the steering target.
- To prevent contact with the ground, you cannot set the value below 1 m.



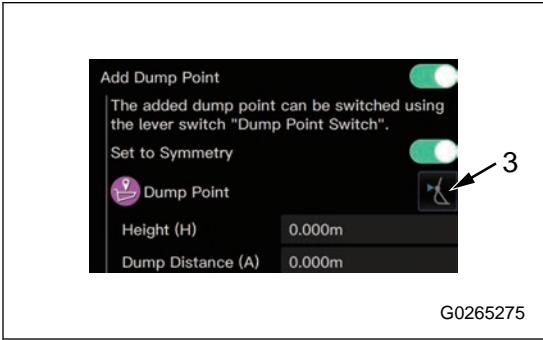
G0261447

**How to add dump point (option)**

Use this setting when you want to add a second dump point. Set the arm top position to the height to be dumped, and tap the position acquisition button (3). The setting conditions are the same as the first dump point.

**REMARK**

For how to change the dump point, see “Change Dumping Point (6-59)”.



G0265275

**How to set “Auto Swing Speed”**

You can change the operation speed when the automatic swing is done. It can be adjusted to an applicable operating speed in response to the work content.

**REMARK**

The positions where the machine goes by or stops will be different in accordance with the setting.

**How to set “Dumping Swing Bucket Angle”**

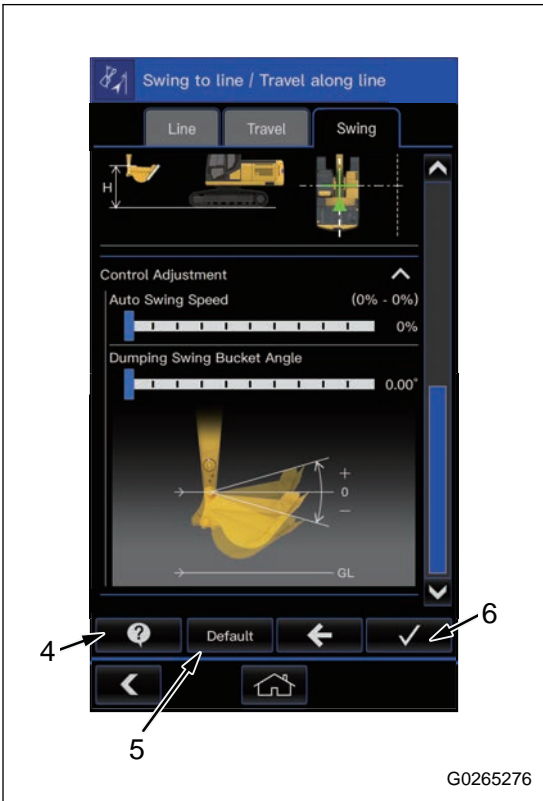
You can adjust the dumping swing bucket holding angle during the auto swing.

**REMARK**

The cylinder of the work equipment reaches the stroke end during the automatic swing control, and the bucket holding angle cannot be kept in response to the registration posture.

**REMARK**

- If the setting or the initial position is not correct, the work equipment cylinder can reach the stroke end. In this case, the bucket hold angle cannot be kept.
- When you tap the help button (4), the overview of this setting is shown.
- When you tap “Default” button (5), all the operations of “Swing” tab are initialized.



G0265276

When you tap the checkmark button (6), the setting completes.